

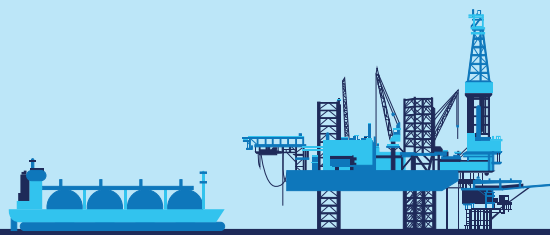
# MARINE & OFFSHORE ENGINEERING INDUSTRY TRANSFORMATION MAP

## VISION

Achieve Global Leadership in Smart Marine & Offshore Engineering Solutions with Optimised Resource Utilisation

## TARGET BY 2025

S\$5.8 billion of value-added  
1,500 new jobs



## THE ROAD MAP

### PREPARING FOR THE UPTURN THROUGH INNOVATION AND PRODUCTIVITY IMPROVEMENTS



Spurring the adoption of robotics and automation to improve productivity and reduce labour dependency



Innovating and harnessing digitalisation to create smart marine & offshore engineering products and solutions

### DEEPENING TIES WITH INDUSTRY ASSOCIATIONS AND UNIONS



Engaging and working with the industry through collaborations with associations and unions



Establishing the Industry Transformation Map (ITM) Programme Office in partnership with the Association of Singapore Marine Industries to support ITM initiatives

### PURSUING NEW GROWTH AREAS



Diversifying into adjacent areas such as LNG and offshore renewables



Fostering more large enterprise and SME collaborations to tap into growth areas



Gaining access to new markets and capabilities through M&As and partnerships with companies in international markets

### EQUIPPING SINGAPOREANS WITH RELEVANT SKILLS



Introducing structured career and skills pathways for PMETs and non-PMETs through Skills Framework



Supporting workforce reskilling through Professional Conversion Programmes to move into new job roles



Preparing a talent pipeline for future jobs in smart marine & offshore engineering products and services, and new growth areas